

The following steps cover how to get to the EPS Functions menu and how to change the configuration for the Loyalty Discount Summary report to print automatically at EOD:

1. Press More until you see Tools then press Tools

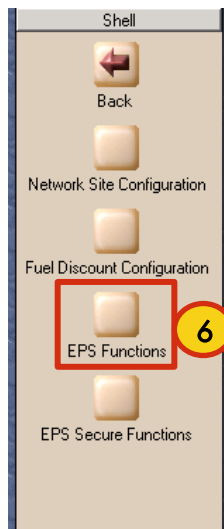
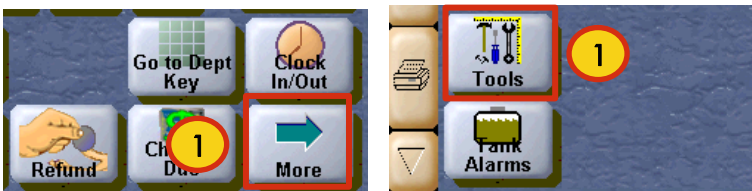
2. Press Mgr Wkstrn
Note: If you have not already done so, you will be prompted to sign on at this point. Refer to the EPS Journaling and Querying Capabilities module for sign on instructions.

3. Press Set Up

4. Press Network

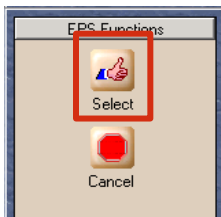
5. Press Shell

6. Press EPS Functions

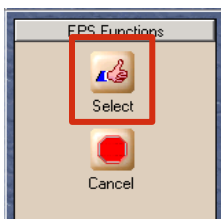
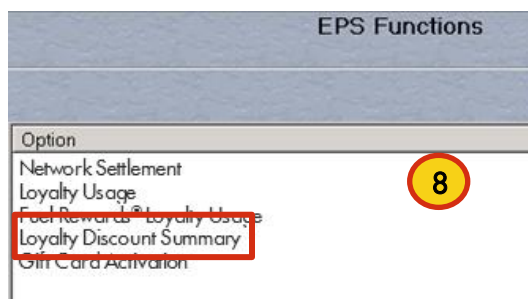


Continued on next page

The following steps cover how to get to the EPS Functions menu and how to change the configuration for the Loyalty Discount Summary report to print automatically at EOD (cont.):



7. Select **EPS Auto Print Report Config** and press **Select**

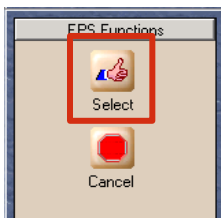
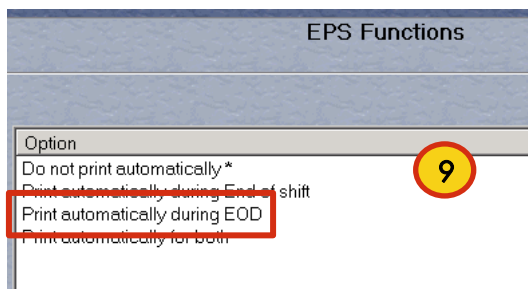


8. Select **Loyalty Discount Summary** and press **Select**

9. Select **Print automatically during EOD** and press **Select**
*An asterisk indicates the current setting

10. Press **Ok**

11. To return to the main POS screen, press **Back** 3 times, **POS**, then **Back** twice



These steps can be repeated for configuring the following reports:

- Network Settlement
- Loyalty Usage
- Fuel Rewards® Loyalty Usage
- Loyalty Discount Summary
- Gift Card Activation

If you selected Wholesaler Configuration (step 7), you would see the menu option 'Do you provide FRN issuance'. Additional menu options may be available in the future.

